



e

rethink  everything

OVERVIEW

.....

eTown is a new smart living community in Jacksonville, Florida, built around the belief that convenience, community, technology, and sustainability enhance a modern way of life. With abundant natural areas, a diverse neighborhood blueprint, and more, there are always new opportunities to find what you connect to at eTown.

A modern interior space featuring a large wooden wall with horizontal planks. In the foreground, there are two leather sofas, one blue and one brown, flanking a round black coffee table with a small potted plant and books. The background shows a dining area with wooden tables and chairs, and a person standing near a large window. The ceiling has exposed wooden beams and three pendant lights.

SMART LIVING :

S U S T A I N A B I L I T Y

C O M M I T M E N T T O P R E S E R V A T I O N

.....

S U S T A I N A B I L I T Y

eTown is a community that compliments both the environment and the lifestyle of the people who live and work in them. With thoughtful design and implementation, coupled with a community-wide commitment that 50% of eTown will remain preserve.

eTown offers retail, restaurants, office space and amenities linked by a pedestrian - and golf cart-friendly path to enhance walkability and community connectivity.

eTown is a smart living community built around the belief that technology, sustainability, and convenience enhance a modern way of life.

.....

Technology for your lifestyle.

Technology brings with it new opportunities for embracing smart living. It is the pulse of our community, which allows you to be more efficient, connected, and flexible in how you choose to manage today's fast-paced world.

Convenience is more than location.

Not only is it easy to get anywhere you need to go because of where we're located, but our community amenities and design also make it just as easy to never leave.

Connected community without borders.

Community isn't just defined by where you live, it's also made up of the people and interests you surround yourself with. Here, you will find a community full of opportunities to discover the people, places, and things you connect to.

Sustainability starts here.

Long-term sustainability doesn't start tomorrow; it starts today with thoughtful design and implementation, coupled with a community-wide commitment to do our part.



CONVENIENCE IS KEY

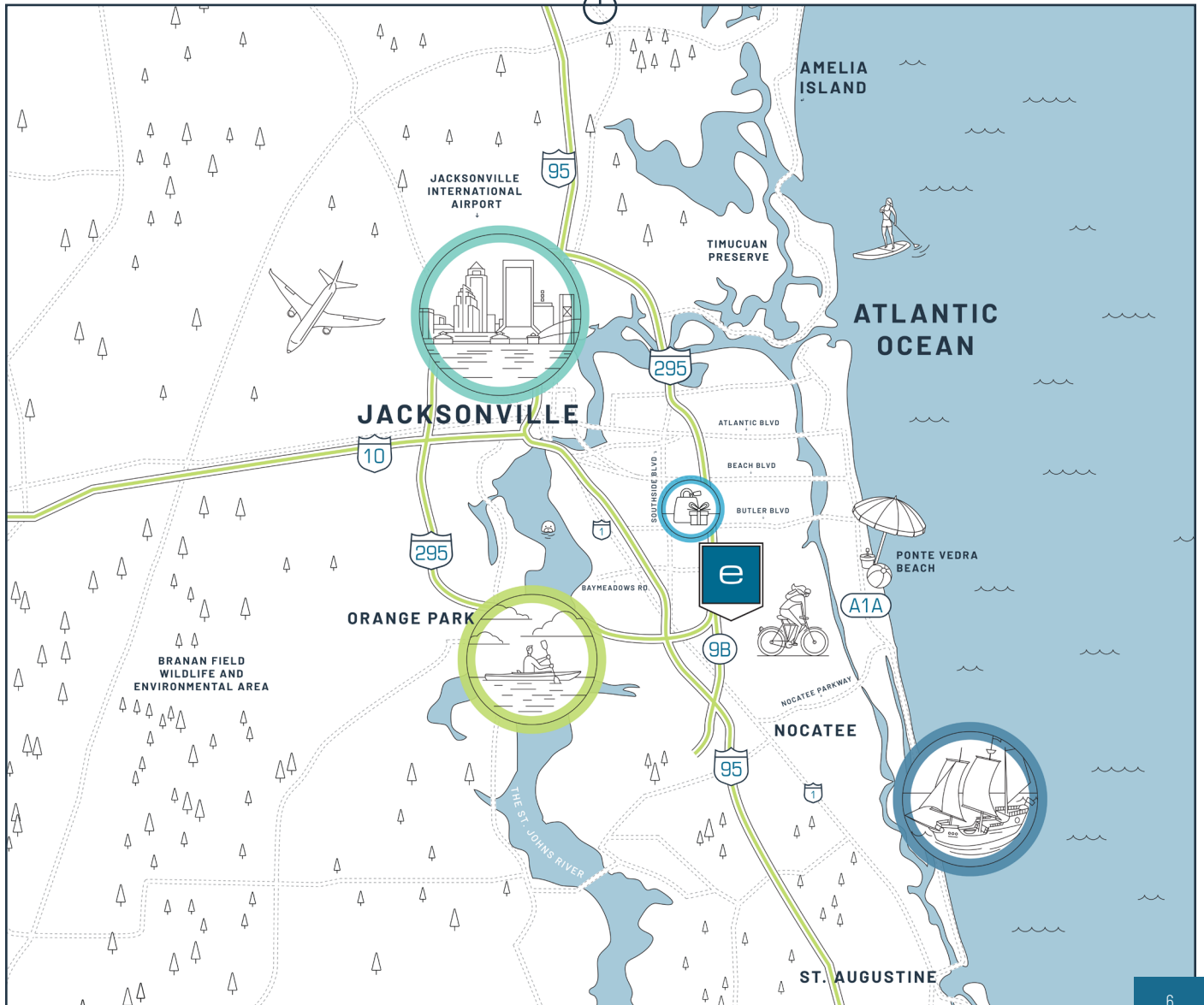
IDEAL LOCATION

.....

eTown redefines modern, smart living with incredible convenience to neighborhood services and shoppes at eTown's Exchange. Residents can enjoy walking, biking or golf carting on the neighborhood trail. Conveniently located at the intersection of 9B and I- 295, residents of eTown are just minutes away to shopping, dining, and entertainment destinations.

- St. Johns Town Center (8 miles)
- Jacksonville Beach (16 miles)
- Durbin Park (7 miles)
- Baptist Medical South (4 miles)
- Memorial Hospital (14 miles)
- Jacksonville International Airport (29 miles)
- UNF (8 miles)
- Downtown Jacksonville (18 miles)
- Mayo Clinic (12 miles)
- Downtown St. Augustine (24 miles)

REGIONAL MAP



NEIGHBORHOODS



eTown features unique neighborhoods designed for a connected community. Each neighborhood is intentionally designed with a focus on convenience, community, technology, and sustainability. Homes feature a comfortable modern-coastal architecture style and are available with added upgrades to increase convenience and community connectivity through state-of-the-art lifestyle technology and sustainability options.

.....

For more information, visit
etownjax.com/neighborhoods.



ETOWN

a **PARC** Community

RETHINK EVERYTHING

LOCAL MAP

KETTERING

PROVIDENCE HOMES &
DAVID WEEKLEY HOMES

NEIGHBORHOODS

- KETTERING
- NEWTON
- EDISON
- NOBEL
- MARCONI
- DEL WEBB
- VOLTA
- MENLO
- OLEA eTOWN
- GRANVILLE

- COMMUNITY AREAS
- THE EXCHANGE
- EXCHANGE WEST

DEL WEBB

PULTE HOMES

COTTAGE ST.

JACKSONVILLE SURF PARK



ENTER / DOWNTOWN

295

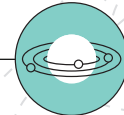
AMENITY CENTER

9B

FUTURE CONNECTION TO EVERRANGE

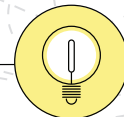
ETOWN PARKWAY

ETOWN PARK



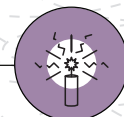
NEWTON

TOLL BROTHERS



EDISON

TOLL BROTHERS



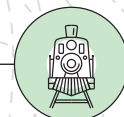
NOBEL

ICI HOMES



MARCONI

DAVID WEEKLEY HOMES



GRANVILLE

DAVID WEEKLEY HOMES



OLEA eTOWN

AGE-TARGETED APARTMENTS



VOLTA

LUXURY APARTMENTS

SMART COMMUNIT

FEATURES



eTown's 5-acre amenity center, Recharge, blends recreation with nature in perfect harmony. The community's amenities, available to qualified eTown residents, includes a resort-style pool, with zero entry and an adjoining three-lane lap pool, a high-tech fitness center with an outdoor yoga lawn, a rooftop patio, kids playground, event lawn, gathering spaces, and dog park.

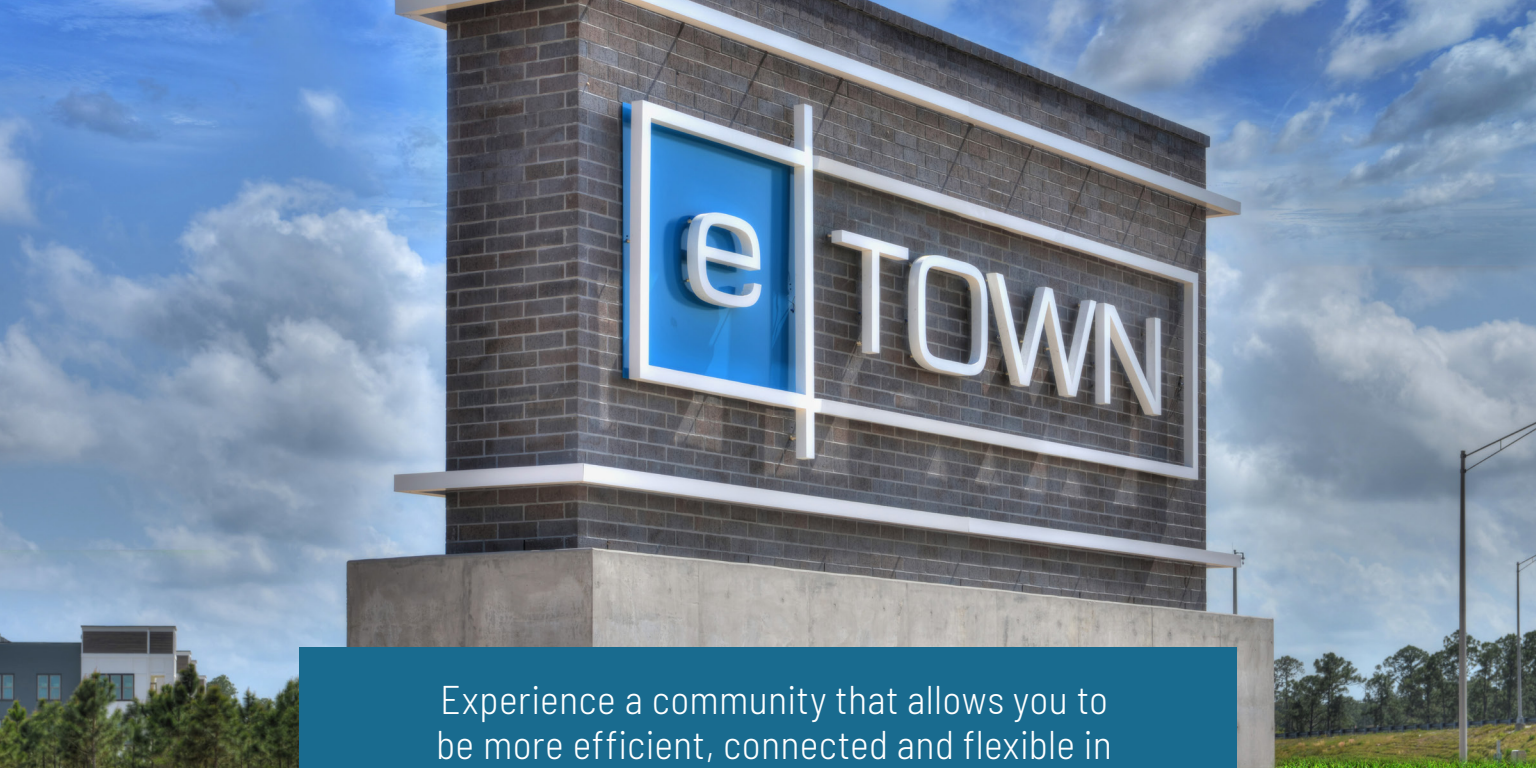


- Neighborhoods designed for a variety of lifestyles
- Centralized gathering spaces to encourage community, such as café with indoor / outdoor seating and rooftop event space beside the pool
- Outdoor recreation such as a yoga lawn and running trail



R^eCHARGE





Experience a community that allows you to
be more efficient, connected and flexible in
today's fast-paced world.



Discover eTown at:

DISCOVERETOWN.COM

ETOWNJAX.COM

[@ETOWNJAX](https://www.instagram.com/ETOWNJAX)

